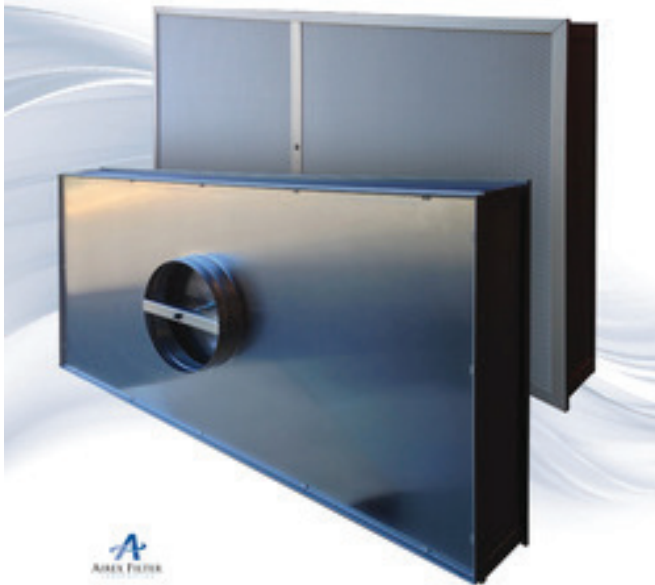


Airex Filter Corporation

Terminal HEPA

Filter Modules



The Airex Terminal Filter Modules provide ducted air supply or mixed-flow in cleanroom applications from class 1 to class 100,000. Available in 99.99%, 99.9995, and 99.99999% efficiencies, each module is tested in accordance with IEST-SPCC-034.1 by dual laser spectrometer using a polystyrene latex (PSL) test challenge. The spectrometer samples simultaneously both upstream and downstream of the filter and calculates its efficiency by particle size in seven size ranges from .07um to 3.0 um. In addition to the test for efficiency and penetration, each filter element is tested for pinhole leaks in the media and the edge sealant by challenging the filter with the test aerosol and scanning the face and edge with a laser particle counter. Airex Terminal Filter Modules use dimple pleat technology to achieve the lowest possible resistance and reduce the possibility of offgassing. The filter terminal is available with a 2 inch pack which offers lower initial cost, weight, and depth; or with a four inch pack which offers significantly lower operation costs for a given efficiency. A painted expanded metal grille protects the filter pack from damage while in use. Each module has a bar code applied that provides complete documentation and testing history of every filter.

Terminal Hood	TH- (All model numbers use this prefix)		
Pack Depth	52-With 2-inch Dimplepleat® filter element 54 - With 4 inch Dimplepleat® filter element		
Size Code	See charts or review instructions above.		
Filter Media	007 - 99.99% min. efficiency on 0.30 micrometers particle size 009 - 99.9995% min. efficiency on 0.12 micrometers particle size 012 - 99.99999% min. efficiency on 0.12 micrometers particle size		
Sealant	SU - Solid urethane and scan tested		
Grille or Diffuser	F - Painted (white) expanded metal S - Circular perforated Type 304 S/S	A - Circular perforated anodized aluminum 0 - NONE	
Inlet	08 - 8 inch diameter 12 - 12 inch diameter	10 - 10 inch diameter 14 - 14 inch diameter	
Damper	A - Adjustable distribution plate B - Butterfly damper with fixed distribution plate (Swaged inlet only) F - Fixed distribution plate		
Insulation	1 - top only 2 - Top and sides 0 - None		
Gasket	B - 1/4" thick black polyethylene butyl W - 1/4" thick white polyethylene butyl	0 - None X - Special as specified by customer	
Skirt	3 - 3/4" knife edge 0 - None		
Light Fixture or sprinkler	L - Light fixture S - Pan for sprinkler penetration	0 - None	
Lamps for Light Fixture	2 - two lamps 3 - Three lamps 4 - Four lamps	0 - None	
Voltage for Light Fixture	1 - 120 volt 2 - 277 volt	0 - None	

Register today for online ordering:

Shop our full line of commercial filtration products:

www.Airexco.com

- featuring unique volume discounts
- quick re-order from history
- various shipping and payment options

TH Modules for Gel Grid Systems Resistance and CFM:

Particle Size Efficiency %	Overall Actual Size LxW (inches)	Size Designator for Pack Depth			2" Pack Depth			3" Pack Depth			4" Pack Depth		
		2 in.	3 in.	4 in.	70	90	100	70	90	100	70	90	100
99.99	23x23	KGG	KGG	KGG	210	270	300	210	270	300	210	270	300
on	23x35	KGP	KGP	KGP	335	430	480	335	430	480	335	430	480
0.30	23x41	KGH	KGH	KGH	400	515	570	400	515	570	400	515	570
Micrometers	23X47	KGQ	KGQ	KGQ	460	595	660	460	595	660	460	595	660
Initial resistance, " w.g.					.42	.52	.57	.35	.45	.50	.28	.37	.40
99.9995	23x23	KGG	KGG	KGG	210	270	300	460	595	660	210	270	300
on	23x35	KGP	KGP	KGP	335	430	480	335	430	480	335	430	480
0.12	23x41	KGH	KGH	KGH	400	515	570	400	515	570	400	515	570
Micrometers	23X47	KGQ	KGQ	KGQ	460	595	660	460	595	660	460	595	660
Initial resistance, " w.g.					.48	.61	.68	.40	.51	.57	.32	.40	.45
99.99999	23x23	KGG	KGG	KGG	210	270	300	460	595	660	210	270	300
on	23x35	KGP	KGP	KGP	335	430	480	335	430	480	335	430	480
0.12	23x41	KGH	KGH	KGH	400	515	570	400	515	570	400	515	570
Micrometers	23X47	KGQ	KGQ	KGQ	460	595	660	460	595	660	460	595	660
Initial resistance, " w.g.					.58	N/A	N/A	.48	.41	.68	.42	.53	.60

TH Modules for Gasketed Tee Grid Systems Resistance and CFM:

Particle Size Efficiency %	Overall Actual Size LxW (inches)	Size Designator for Pack Depth			2" Pack Depth			3" Pack Depth			4" Pack Depth		
		2 in.	3 in.	4 in.	70	90	100	70	90	100	70	90	100
99.99	23-5/8 x 23-5/8	E2786	E0291	E2786	220	285	315	220	285	315	220	285	315
on	23-5/8 x 35-5/8	E-2886	E0391	E-2886	345	445	495	345	445	495	345	445	495
0.30	23-5/8 x 41-5/8	E1296	E1396	E1296	410	525	585	410	525	585	410	525	585
Micrometers	23-5/8 x 47-5/8	E2986	E0491	E2986	475	610	680	475	610	680	475	610	680
Initial resistance, " w.g.					.42	.52	.57	.35	.45	.50	.28	.37	.40
99.9995	23-5/8 x 23-5/8	E2786	E0291	E2786	220	285	315	220	285	315	220	285	315
on	23-5/8 x 35-5/8	E-2886	E0391	E-2886	345	445	495	345	445	495	345	445	495
0.12	23-5/8 x 41-5/8	E1296	E1396	E1296	410	525	585	410	525	585	410	525	585
Micrometers	23-5/8 x 47-5/8	E2986	E0491	E2986	475	610	680	475	610	680	475	610	680
Initial resistance, " w.g.					.48	.61	.68	.40	.51	.57	.32	.40	.45
99.99999	23-5/8 x 23-5/8	E2786	E0291	E2786	220	285	315	220	285	315	220	285	315
on	23-5/8 x 35-5/8	E-2886	E0391	E-2886	345	445	495	345	445	495	345	445	495
0.12	23-5/8 x 41-5/8	E1296	E1396	E1296	410	525	585	410	525	585	410	525	585
Micrometers	23-5/8 x 47-5/8	E2986	E0491	E2986	475	N/A	N/A	475	610	680	475	610	680
Initial resistance, " w.g.					.58	N/A	N/A	.48	.41	.68	.42	.53	.60

For more information, please visit our informational website

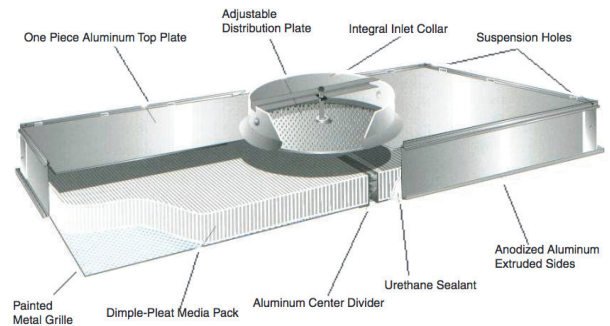
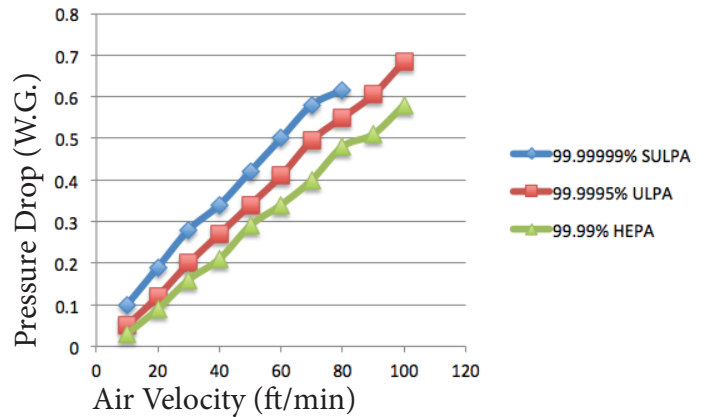
www.AirexFilter.com



Airex Filter Corporation

Terminal HEPA

Filter Modules



- Anodized extruded aluminum frame with one piece aluminum top/inlet collar
- Dimple Pleat® filter pack for a lightweight and low profile design
- State of the art testing
- UL 900 Class 1 Listed and Factory Mutual Approved



Underwriters Laboratories, Inc. (UL) is an agency that lists products they have tested against criteria deemed appropriate for public safety. The classification for HVAC air filters confirms that the filters will meet local and state requirements for most applications.

UL 900 covers both washable and throwaway filters, used for the removal of dust and other airborne particles from mechanically circulated air in equipment and systems. This is in accordance with the Standards of the National Fire Protection Association (NFPA) for Installation of Air Conditioning and Ventilating Systems, of Other Than Residence Type, NFPA No. 90A, and for Installation of Residence Type Warm Air Heating and Air Conditioning Systems, NFPA No. 90B.



Administrative Office Manufacturing Plant I

17 Executive Drive
Hudson, NH 03051
800-660-2298

Production Office Manufacturing Plant II

19 Executive Drive
Hudson, NH 03051
800-660-2298

